

THE LAKES

—THE MANOR FARM BARNNS



THE MANOR — FARM BARNs

A rare opportunity to be a part of an exclusive development of barn conversions within The Lakes by YOO Estate. Located in the heart of the Gloucestershire countryside, these spaces provide the perfect Cotswolds base and are an opportunity to be a permanent resident of The Lakes community.

Each barn boasts a wealth of history and character features, as well as spacious open-plan living with stunning views of the neighbouring sailing lake. The Manor Farm Barns are a rare and unique opportunity

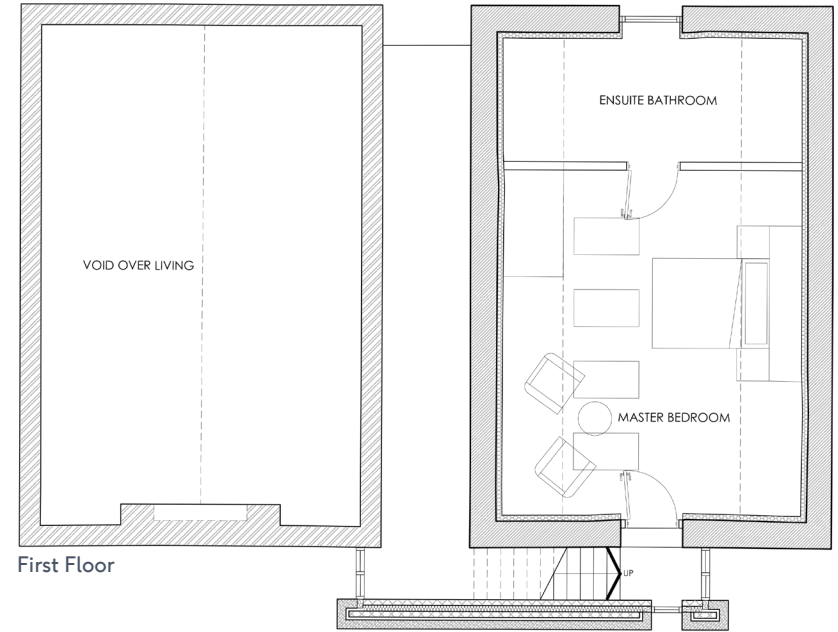
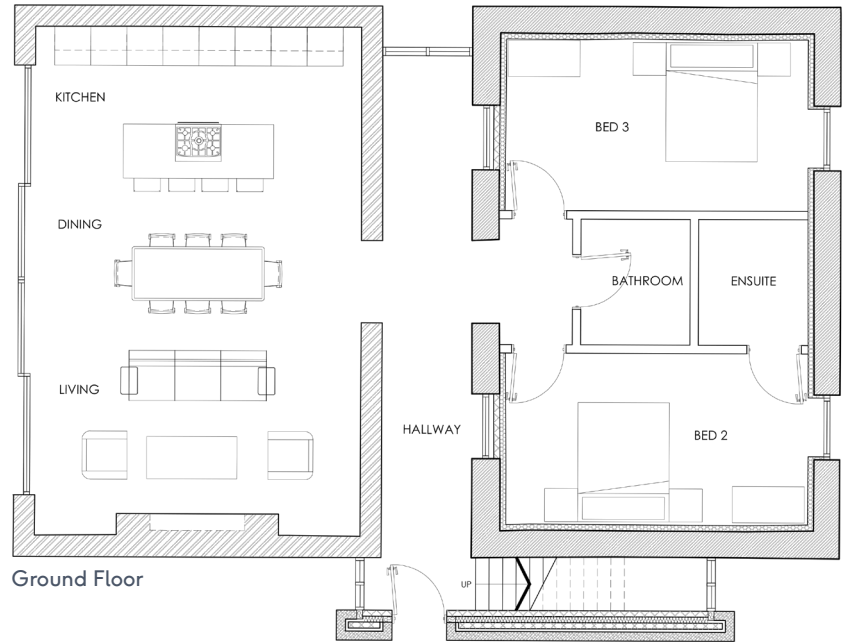


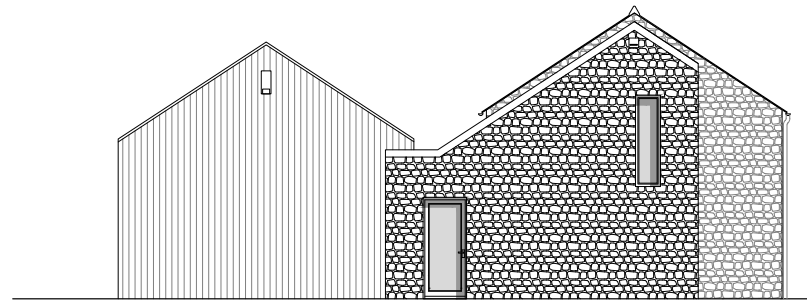


THE BAKERY

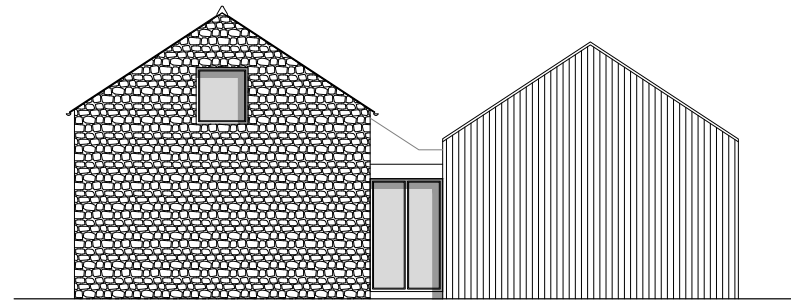
The Bakery is quaint Cotswolds cottage with a modern twist that brings it back to life.

A 3-bedroom, 3-bathroom, 2 storey barn conversion in the Cotswolds, this unique cottage sits on the extended part of the exclusive Lakes by YOO Estate. It comes with luxurious modern interiors featuring open-plan living, including a fully equipped kitchen and a dining/living area, perfect for entertaining family and friends.

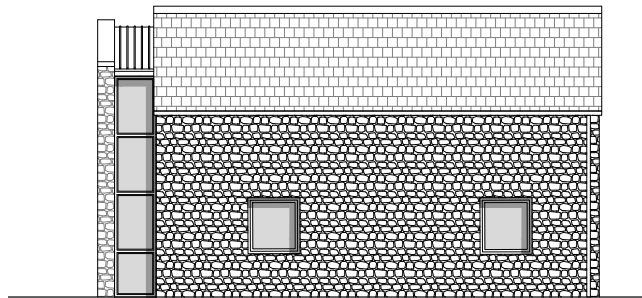




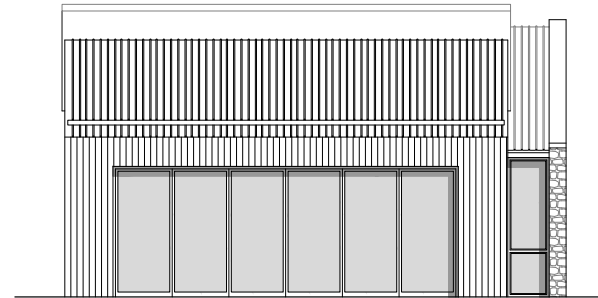
South



North



East



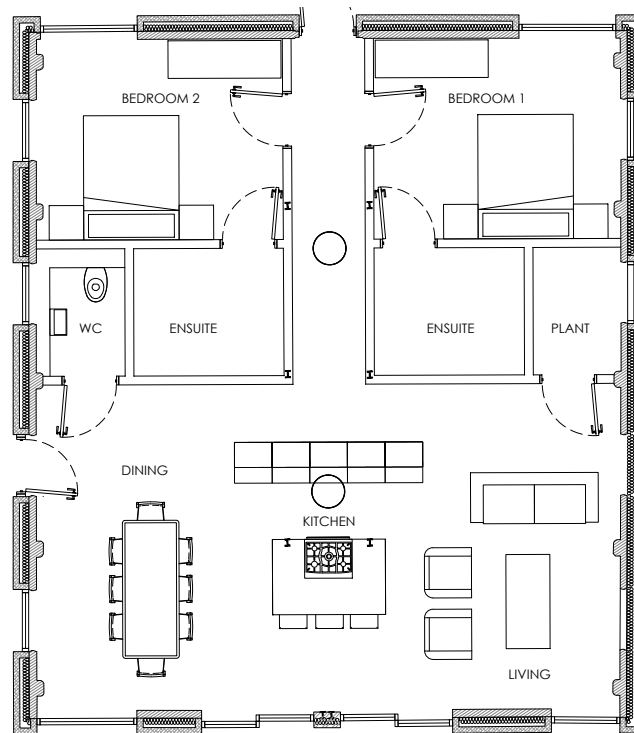
West



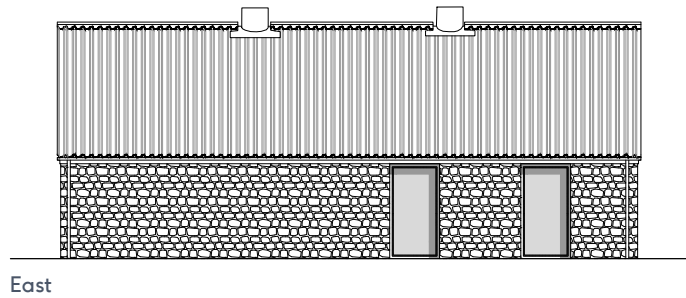
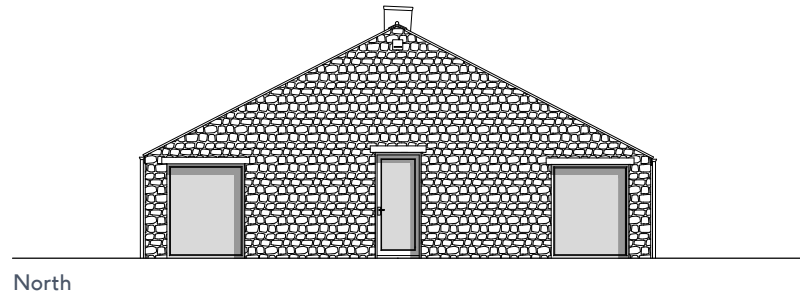
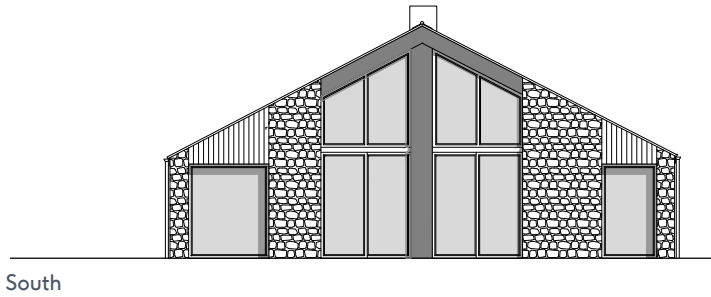
THE PIGGERY

With incredible south-facing views of Bowmoor Sailing lake and featureful architecture, The Piggery is an idyllic Cotswolds getaway.

A 2-bedroom, 2-bathroom, ground floor barn conversion which is located on the exclusive Lakes by YOO Estate. This one-of-a-kind countryside home features beautiful exterior and interiors, including a kitchen with modern appliances and a cosy open-plan living/dining space. The finishing touch to this property is its outdoor swimming pool with a lounging area for sunbathing and entertaining.



Ground Floor

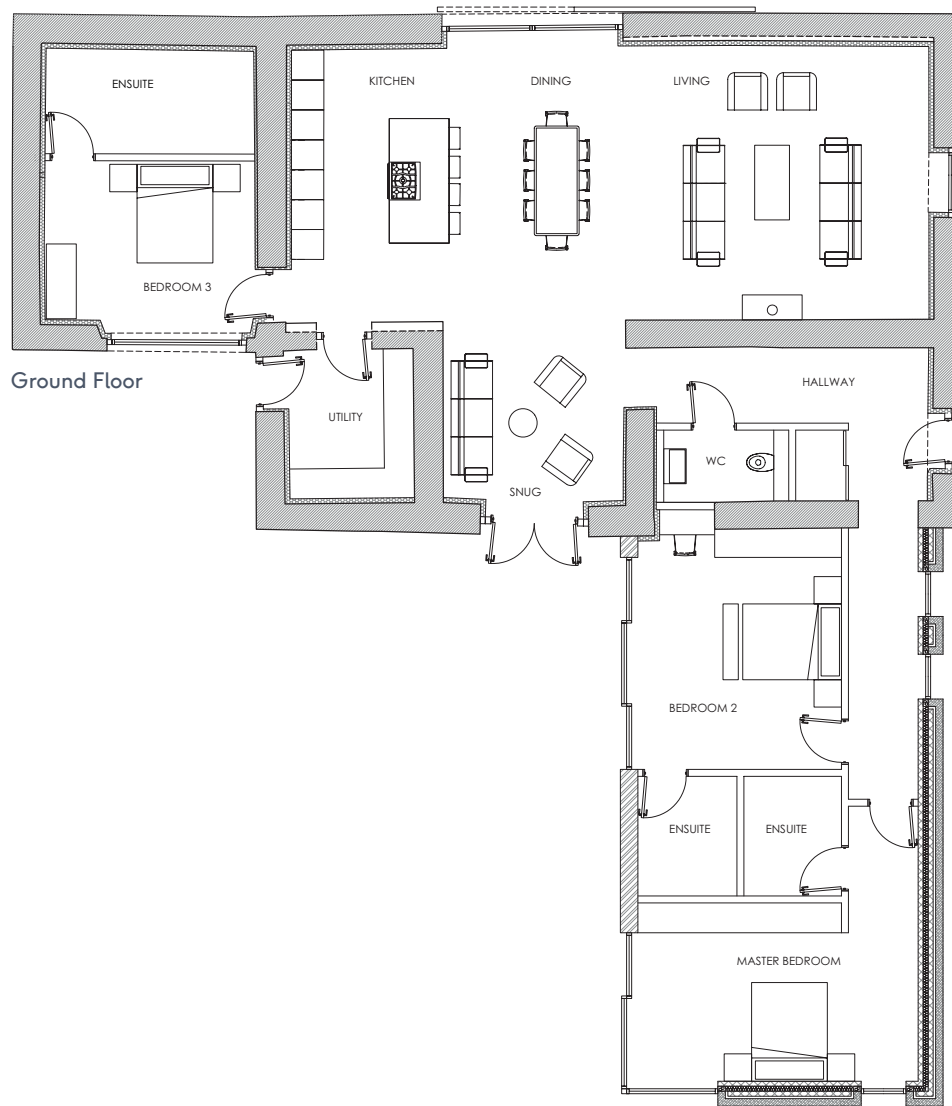




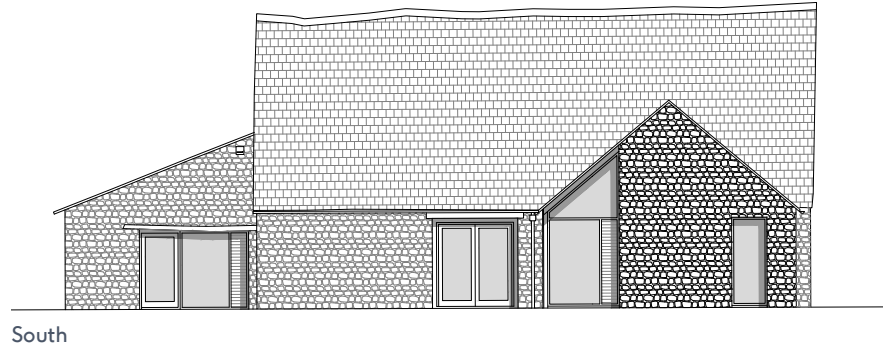
THE SHREDDING BARN

The Shredding Barn offers stunning and spacious accommodation over two floors with south-facing views of Bowmoor Sailing lake.

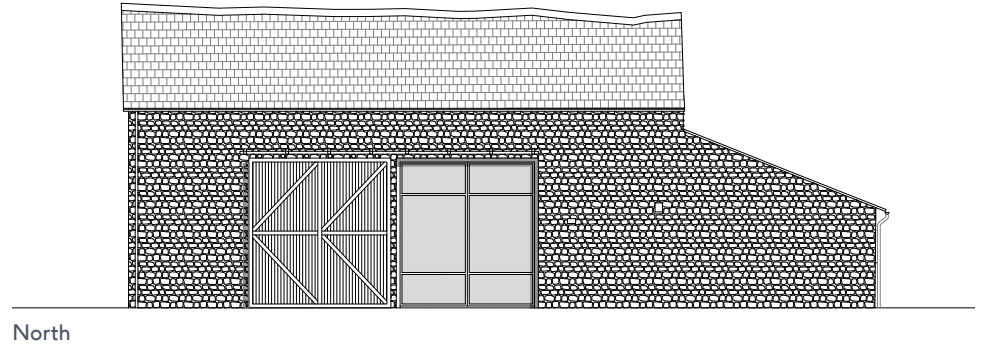
A 3-bedroom, 4-bathroom barn conversion in the Gloucestershire countryside. Situated in the Cotswolds on The Lakes by YOO Estate, this unique home includes a fully equipped kitchen with a utility room, an open-plan living/dining space and a separate snug area that leads to its relaxing outdoor space with outdoor swimming pool.



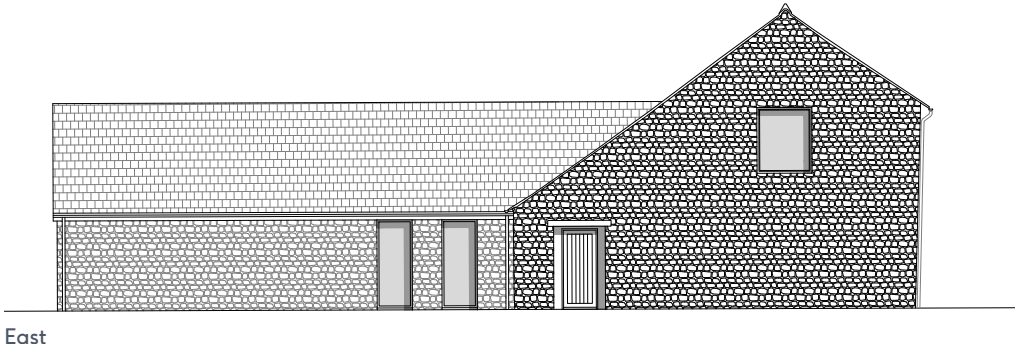
Ground Floor



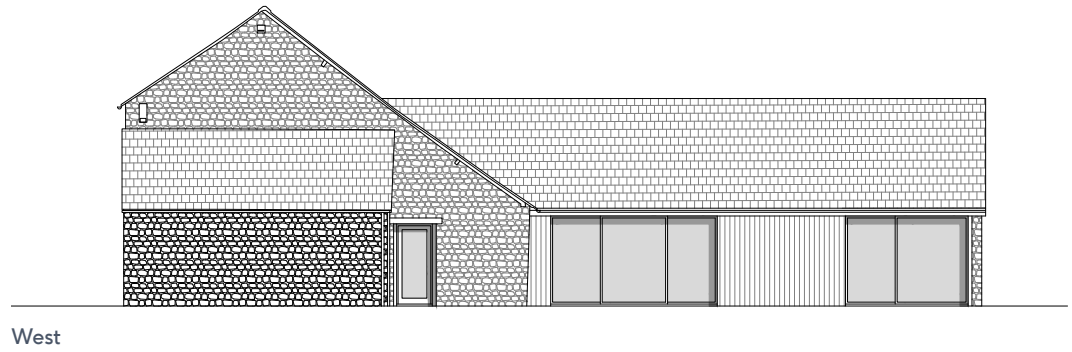
South



North



East



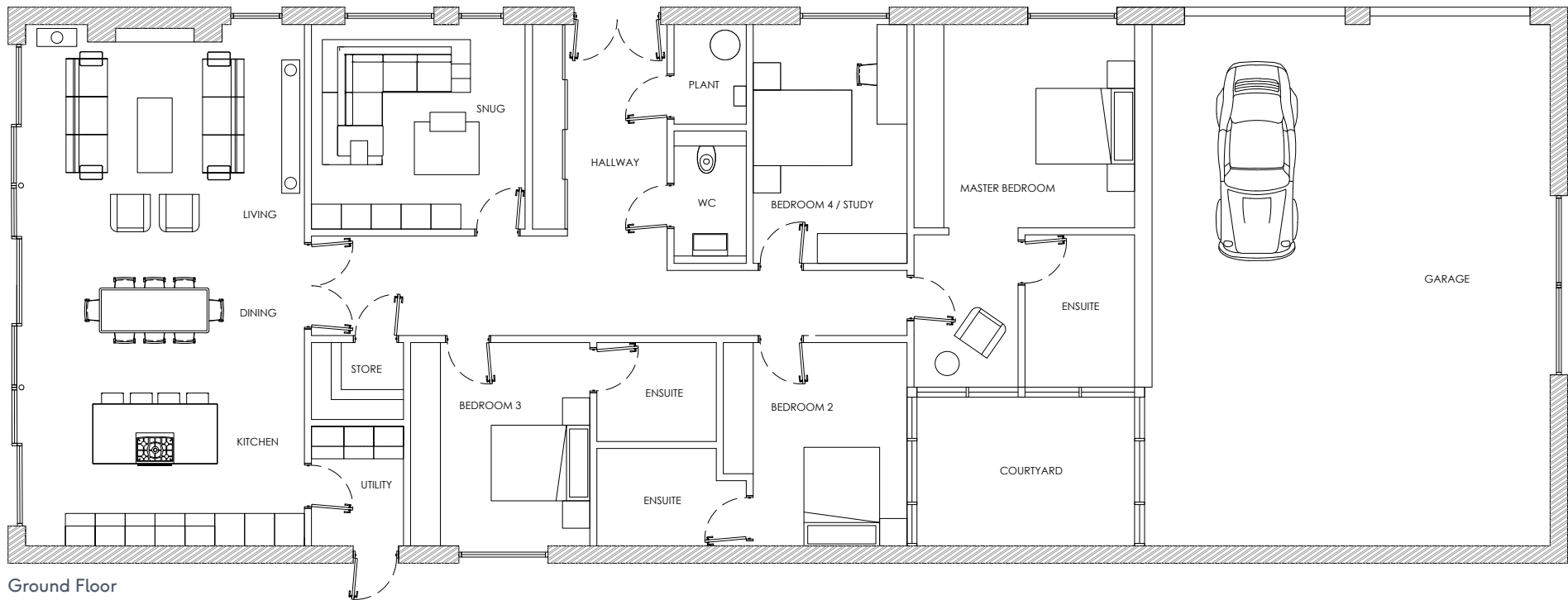
West

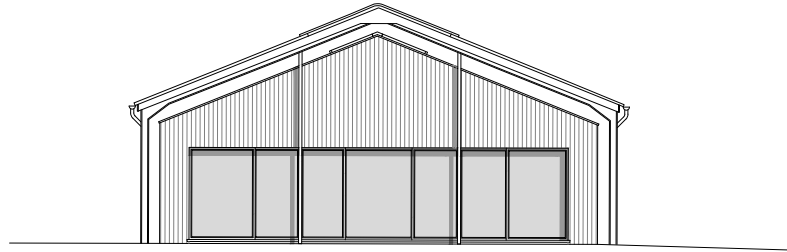


THE WAREHOUSE

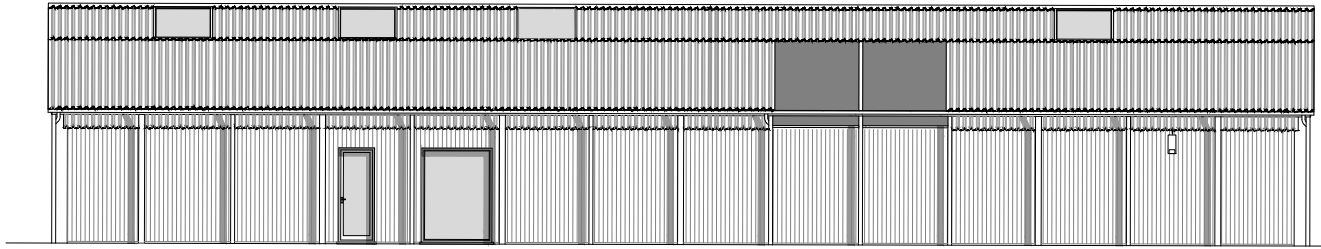
A Cotswolds car collectors dream. This home features expansive lateral living space with stunning south-facing views of Bowmoor Sailing lake.

A 4-bedroom, 4-bathroom, luxury barn conversion. A car collectors haven, The Warehouse features a garage with ample parking for 4 supercars or classic cars. Use this as your Cotswolds base for enjoying the lovely local lanes in and around Lechlade. This one-of-a-kind home features a spacious open-plan living space with living, dining and kitchen areas.

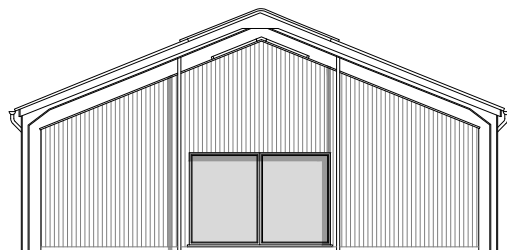




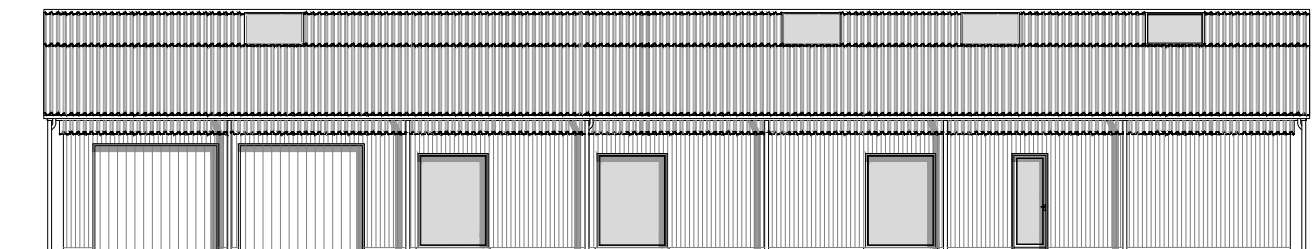
South



East



North



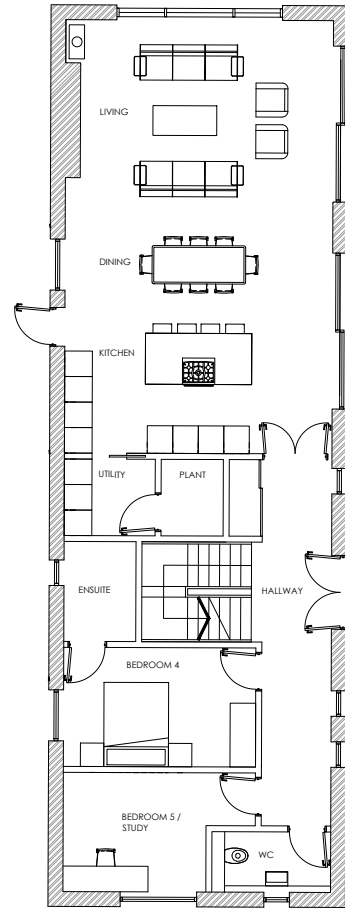
West

THE ROLLTOP

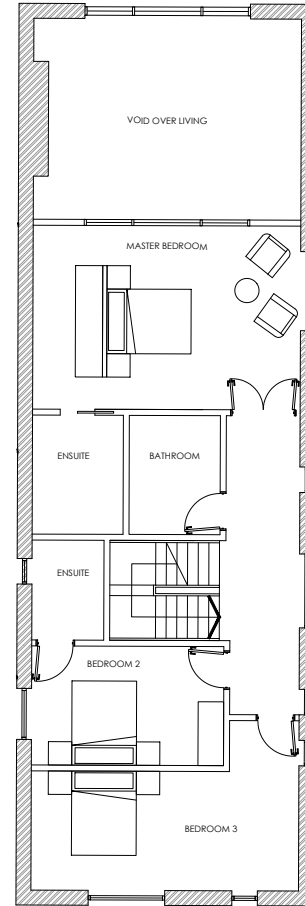


A Dutch Barn style roll top barn providing stunning and featureful accommodation throughout.

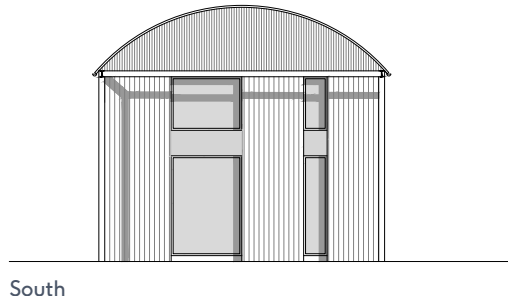
A 5-bedroom, 5-bathroom, 2 storey barn conversion. This one-of-a-kind home sits on the extended part of the exclusive Lakes by YOO Estate in the Cotswolds. The Rolltop comes fully furnished, with luxurious interiors featuring open-plan living, including a fully equipped kitchen with utility room and a dining/living area, perfect for entertaining.



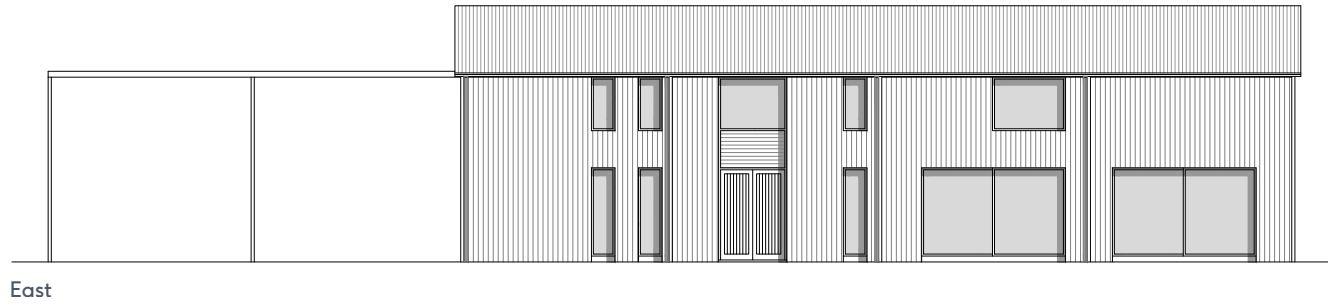
Ground Floor



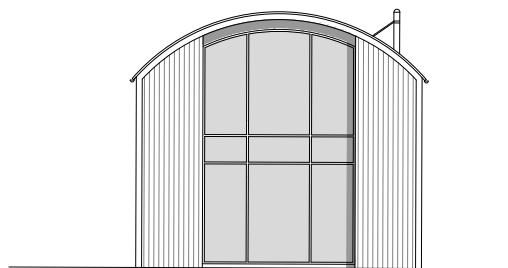
First Floor



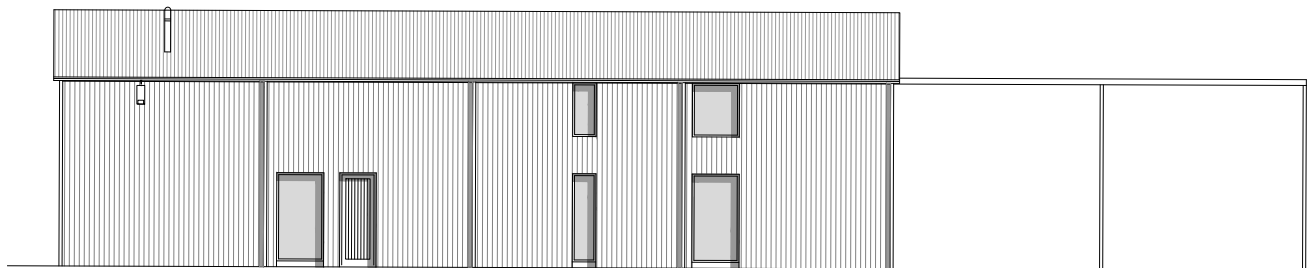
South



East



North



West

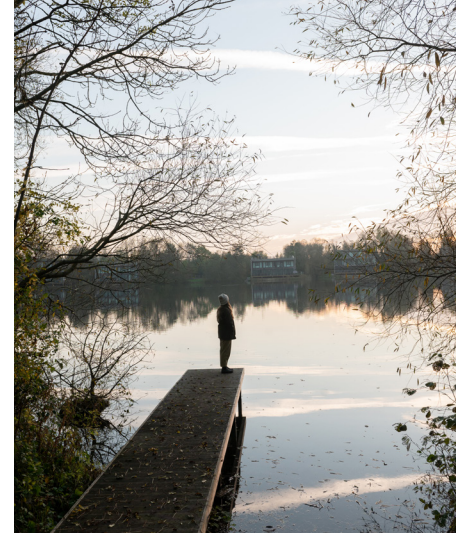
THE LAKES— BY YOO

The Manor House Barns are set within 850 acres of freshwater lakes, woodlands and meadows.

The Lakes By YOO is a secure estate in the heart of the Cotswolds. Within 90 minutes of London and international transport links, it is home to 160 luxury family homes.

With a full concierge service, activities team and our relaxing spa & wellness centre, The Lakes is a playground for all the seasons—the perfect Cotswolds base for families, groups and couples alike.





**850 ACRES OF
LAKES, WOODLANDS
AND MEADOWS**



THE LAKES **byyoo**

For more information and viewings please contact:

sales@thelakesbyyoo.com
+44 (0)1367 254 260

Alternatively you can contact Knight Frank:

alasdhair.lochrane@knightfrank.com
+44 (0)1285 882 006

The Lakes by YOO
nr Lechlade Cotswolds, GL7 3DT

thelakesbyyoo.com/own

